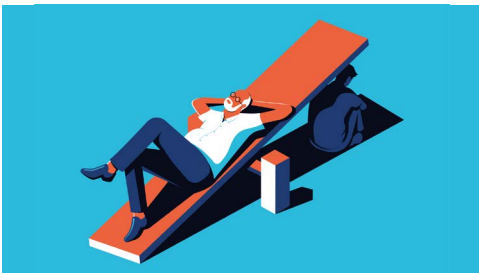
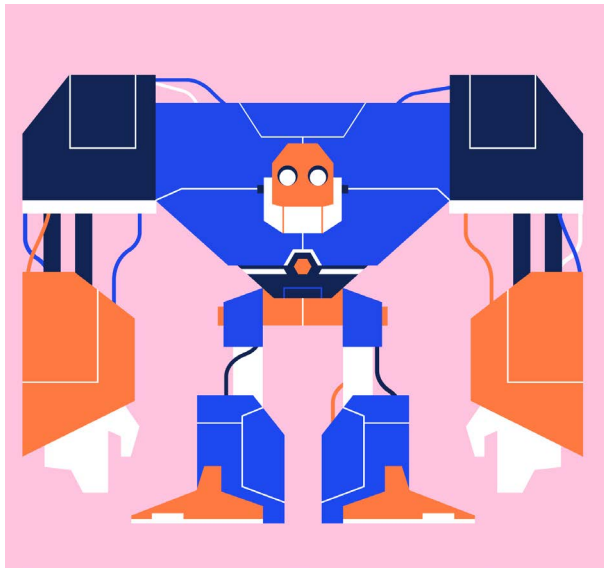


As a conceptual illustrator, Beth's work is primarily about solving problems. She creates one-of-a-kind illustrations that express an understandable concept in a bold and exciting way. She has a degree in Illustration and a natural flair for graphic design, which strongly influences her work and minimal colour palette. Beth's bold visual language lends itself to editorial, publishing and advertising campaigns alike.



CLIENTS INCLUDE:



SIEMENS

ABSOLUT.

BRITISH AIRWAYS

BARCLAYS

Prospect